

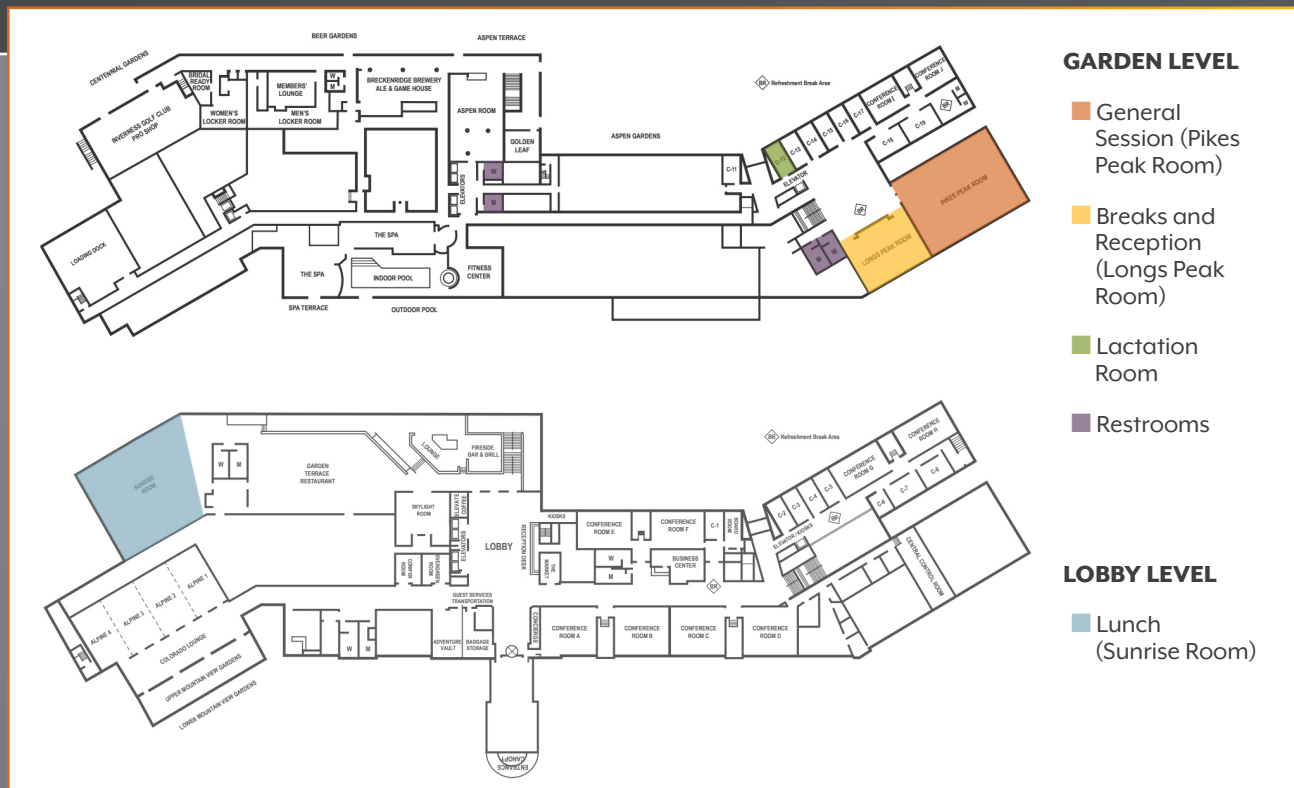


# HOT ISSUES IN HEALTH

DECEMBER 9, 2022 • HILTON DENVER INVERNESS



COLORADO **HEALTH** INSTITUTE



## TODAY'S SPACE

All of today's conference sessions take place in the Pikes Peak Room on the Garden Level. Breaks throughout the day and the reception this afternoon will be hosted in the Longs Peak Room, adjacent to the Pikes Peak Room. Lunch will be served upstairs in the Garden Terrace Restaurant's Sunrise Room. Conference Room 12, across from the elevator, is available for nursing parents. Restrooms on the Garden Level are located next to the Pikes Peak Room and down the hallway across from the Fitness Center.

## COVID PROTOCOLS

Thank you for following local COVID-19 protocols and for adhering to the posted signage. Should you start to feel ill over the course of the day, we ask that you exit the public spaces immediately. A member of our team can provide information about online access, so you don't miss the remainder of the conference.

Should you test positive for COVID-19 within the next 10 days of this conference, please notify Trenton Garber at 720.382.7077. This request is for internal tracking only; your personal information will not be recorded or shared.



2018



2015



2019

# What a joy to be back together again.

Many months ago, when we began to think about hosting our first in-person Hot Issues in Health since 2019, we felt some trepidation. Would people feel comfortable attending an in-person event? After meeting on Zoom for so long in our sweatpants, would people be willing to dress up and drive across town — or across the state — to talk about health policy in person?

Turns out, the answer was a resounding yes.

Because something magical happens at Hot Issues in Health. When we put our heads together, we spark ideas, form partnerships, and make progress. And Coloradans need us to make progress in so many areas.

We meet you today at an inflection point for our state. We face significant challenges; we also have unprecedented opportunities. You will hear today about CHI's three initiatives, key health policy issues we believe need attention if we are to advance health and health equity in Colorado. We have built our agenda around these issues: climate and health, integrating systems of care, and behavioral health. You will hear about the work not only that CHI is doing but that leaders, experts, and communities throughout Colorado are driving. And we want to hear from you about what you see as the challenges and opportunities in the year ahead.

So much has happened since we last met in person! COVID-19 changed the world, Colorado, even CHI. The pandemic prompted us to think deeply about public health, health equity, healthy communities, and the social determinants of health. Today, we're excited to introduce you to some of our talented new team members and dive deeper into these three new initiatives — the hottest issues in health for Coloradans.

Thank you for being with us today.



Sara Schmitt  
Interim President and CEO  
Colorado Health Institute



2016





2019

## WIFI INSTRUCTIONS

Locate and connect to the network named **Hilton Denver Inverness**. You should be taken to a login page in your browser. Scroll past sign in and click the Guest WiFi Connect button, then click "I have a promotional code." Enter the code **Connect**.

## LIVESTREAMING AND RECORDING

We are livestreaming the conference for those who are unable to join us in person. If your colleagues could not attend today's conference, they can watch the video stream on CHI's website, [coloradohealthinstitute.org](http://coloradohealthinstitute.org). A recording of the entire conference will be posted on the website within a few days of the conference.

## TWITTER

Follow CHI on Twitter at **@CoHealthInst** to keep up with all the Hot Issues action. We will be tweeting conference announcements, updates, and other relevant information. Use the hashtag **#HIHC22** to add to the conversation.

## GIFT CERTIFICATE DRAWING

We are continuing our annual tradition of sending one of our attendees home with a new bicycle, but we're giving you more options. The winner of this year's drawing will receive a gift certificate to an outdoor retailer, so if biking isn't your thing, you can get the gear for your sport of choice. Hot Issues attendees will receive two drawing tickets at registration.

Presenters also have extra tickets to give away in their sessions, so participate fully and you might be rewarded. The drawing will take place at the conclusion of the conference, right before the reception. You must be present to win.



2018



2014



2016

## Hot Issues in Health is made possible by funding and support from generous sponsor organizations.

The Colorado Health Institute acknowledges and thanks these sponsors, who exhibit a clear commitment to fostering productive policy conversations, moving the needle on health care issues, and advancing health equity in Colorado through their financial support of this conference.

We extend our gratitude to the following organizations:

### EQUITY AND ACCESSIBILITY SPONSOR



The Colorado Health Foundation™

---

### BREAKFAST SPONSOR



### LUNCH SPONSOR



### RECEPTION SPONSOR



### SCHOLARSHIP SPONSOR



### ADDITIONAL SUPPORT





# AGENDA

**7:15-8:15 a.m. Breakfast** Sponsored by COPIC

**8:15-9 a.m. Welcome and Opening Remarks**

- **Sara Schmitt**, Interim President & CEO, CHI
- **Jeff Bontrager**, Director of Research and Evaluation, CHI
- **Emily Johnson**, Director of Policy Analysis, CHI
- **Sponsor Remarks**, **Colorado Health Foundation**



**9-10 a.m. Let's Acclimate, Colorado: The Leadership Needed to Protect Community Health from Climate Change**

Colorado's warming climate is hazardous to our health. We need preparation to protect people's bodies and minds from the damaging impacts of rising temperatures. And often, people with the least resources are at the highest risk.

Adapting to climate change means that communities often must take matters into their own hands. What type of community leadership is needed to make lasting change? This interactive session will explore the intersection of climate and community, policy and priorities, action and Acclimate Colorado — a campaign to bolster the resilience of Colorado communities to a warming climate.

- **Karam Ahmad**, Senior Policy Analyst, CHI
- Panel Host: **Javier Soto**, President & CEO, The Denver Foundation
- Panelists: **Renée M. Chacon**, Executive Director, Womxn from the Mountain  
**Olga González**, Executive Director, Cultivando  
**Dan Waldvogle**, Director of External Affairs, Rocky Mountain Farmers Union

**10-10:20 a.m. Remarks from Gov. Jared Polis**

- Introduction: **XXXXXXXXXX**, Board of Trustees, CHI

**10:20-10:35 a.m. Break**

**10:35-11:35 a.m. Fragmented Systems of Care: Can We Ever Escape?**

Public health, social service, and health care systems must redefine how they work — and how they work together. Systems integration can be highly technical work, but at its heart it is a human endeavor that will succeed or fail based on the relationships and trust among participants. Join the conversation in this interactive escape room-themed session, which will focus on solving our hardest problems together.

- **Ashlie Brown**, Director, CHI
- **Nicole Weber**, Program Manager, CHI
- Facilitators: **Nina Bastian**, **Kirsti Klaverkamp**, **Suman Mathur**, Program Managers, CHI

**11:45 a.m.-1 p.m. Lunch** Sponsored by **Colorado Access**

## 1-2 p.m. It's Not Just COVID: A Social Justice Lens on the Mental Health Crisis

Rising rates of poor mental and behavioral health have long been of concern to policymakers and advocates in Colorado. The 2021 Colorado Health Access survey showed the largest increase in self-reported poor mental health to date, with more than one in five people reporting this challenge. Many researchers have cited the COVID-19 pandemic as the main driver of this trend. But could there be more to the story? In this fireside chat with two behavioral health experts, we will explore the complex causes of poor mental health and the roles that providers and state government can play in addressing them.

- **Suman Mathur**, Program Manager, CHI
- **Morgan Medlock**, Commissioner, Behavioral Health Administration
- **Lesley Brooks**, Chief of Addiction Medicine, SummitStone Health Partners

## 2-2:15 p.m. Break

## 2:15-3:15 p.m. 2023 Legislative Session Preview

CHI's legislative team will recap recent health policy and election developments and provide a preview of the year ahead. What do the election results mean for bills in the next legislative session? How will the state's cooling economic situation impact what policymakers can accomplish? And what effects will other upcoming changes, like the end of the public health emergency, have on priorities? This conversation sets the stage for how we can work together toward better health in 2023.

- **Joe Hanel**, Director of Communications, CHI
- **Allie Morgan**, Director, CHI

## 3:15-3:25 p.m. Closing Remarks and Gift Certificate Drawing

- **Kristi Arellano**, Managing Director of Marketing & Communications

## 3:25-5 p.m. Reception

Sponsored by the Colorado Hospital Association

Remarks from **Katherine Mulready**,  
Senior Vice President and Chief Strategy Officer, CHA



2018



2015



2016



2019

**We're strengthening  
bodies, minds and  
communities in the  
fight against unfair and  
avoidable differences  
in health.**



**coloradohealth.org**



The Colorado Health Foundation™



# HOSPITALS: here for *you*



## Our *Patients*



In 2021, we stabilized **1.8m people** in our emergency departments, delivered **60k babies**, and cared for **8.3m outpatients**.

## Our *People*



**96k heroes** keep our hospitals running and ready to meet the needs of any patient.

## Our *Communities*



Hospitals provided more than **\$3.3 billion in community benefits** in 2020.

Follow CHA on Twitter **@COHospitalAssn** to see more stories.



## COMMUNITY BEYOND COVERAGE

Beyond being a premier medical liability insurance carrier, we support our communities by advocating for medical providers and patient safety. And, we have an enduring commitment to corporate social responsibility—from grant funding through the COPIC Medical Foundation to philanthropic giving and employee volunteer engagement.

**That's Value Beyond Coverage.**

 **COPIC**  
Better Medicine • Better Lives  
[CALLCOPIC.COM](http://CALLCOPIC.COM) | 800.421.1834



## We're in Your Corner

People today can spend nearly half their lives over the age of 50. That's a lot of living. So, it helps to have a wise friend and fierce defender like AARP in your community.

Find us at [aarp.org/nearyou](http://aarp.org/nearyou).

 /aarpcolorado  @aarpcolorado

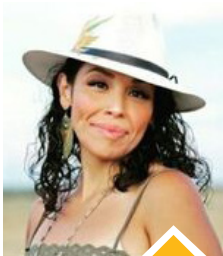
AD TK

# SPEAKERS



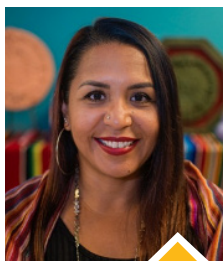
## **Dr. Lesley Brooks** Chief of Addiction Medicine, SummitStone Health Partners

Dr. Lesley Brooks serves as the Chief of Addiction Medicine for SummitStone Health Partners and as the Assistant Medical Director for the North Colorado Health Alliance. A board-certified family physician, she has practiced full-scope family medicine, including prenatal care, chronic pain, and substance use disorder/addiction, in northern Colorado for more than a decade. Since her transition to SummitStone Health Partners in 2020, Dr. Brooks specializes in substance use and mental health.



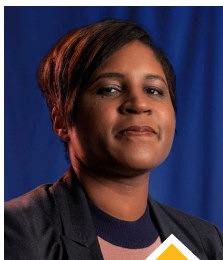
## **Renée M. Chacon** Executive Director, Womxn from the Mountain

Renée M. Chacon is a Diné/Xicana/Filipina from southern Colorado and New Mexico. She serves as a member of the Environmental Justice Action Taskforce, and Co-Chair on the Equity Analysis Subcommittee for the Colorado Department of Public Health & Environment, and is a cultural educator in several environmental justice initiatives to stop environmental racism in Commerce City. In addition to her work in environmental justice, Chacon is also a sahumadora for Kalpulli ColorAztlan and is the co-founder and executive director of Womxn from the Mountain, a nonprofit working to clean and protect our communities and environment.



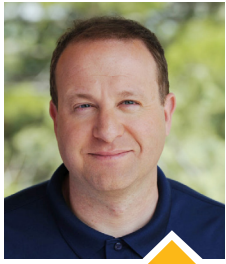
## **Olga González** Executive Director, Cultivando

Olga González has been a nonprofit professional and community organizer for the past 28 years. She is the Executive Director of Cultivando, a Latinx-serving organization that focuses on developing the leadership, advocacy, and capacity of the Spanish-speaking community. González is also CEO of O.G. Consulting Services, where she provides equity, justice, and healing facilitation and coaching services to businesses and nonprofits nationally. She has earned several awards for her work in the areas of inclusiveness, equity, and social justice. González holds a dual bachelor's degree in psychology and Chicano studies from Scripps College in Claremont, California. She also earned a master's in nonprofit management from Regis University as a Colorado Trust Fellow.



## **Dr. Morgan Medlock** Commissioner, Behavioral Health Administration

Dr. Morgan Medlock was appointed the Behavioral Health Commissioner for the State of Colorado and a member of the Governor's Cabinet in January 2022. An emergency psychiatrist and addiction medicine specialist by training, she previously served as the Chief Medical Officer and Director of Crisis and Emergency Services for the Washington, D.C., Department of Behavioral Health. She also served on the faculty of the Massachusetts General Hospital Center for Law, Brain, and Behavior and Howard University College of Medicine and held a previous appointment as a Clinical Fellow in Psychiatry at Harvard Medical School. Dr. Medlock served on the American Psychiatric Association's Council on Minority Mental Health and Health Disparities, including a term as Vice Chair from 2019-2020. She received her MPH from Harvard's T.H. Chan School of Public Health, her MD from the Mayo Clinic School of Medicine, and her MDiv from Andrews University.



### **Jared Polis, Colorado** Colorado Governor

Gov. Jared Polis is an entrepreneur, education leader, public servant, and Colorado native. After launching several successful companies, Polis committed himself to making sure other Coloradans had the opportunity to pursue their dreams. Polis founded schools for at-risk students and new immigrants and started nonprofits to help veterans and entrepreneurs. Prior to serving as governor, Polis served on the State Board of Education, where he worked to raise pay for teachers and reduce class size for students, and represented Colorado's 2nd Congressional district.

As governor, Polis has focused on saving Coloradans money, keeping our economy strong, and preserving our Colorado way of life. Polis delivered universal free full-day kindergarten, signed a number of bills to save families money on health care, and made significant progress toward the goal of 100% renewable energy by 2040, all while cutting taxes for small businesses and investing in affordable housing and transportation. His efforts to expand health care access to medically underserved communities and to ensure that equity and justice remain central to building a Colorado for all have produced impactful legislation and made progress toward his administration's bold vision.



### **Javier Alberto Soto** President and CEO, The Denver Foundation

Javier Alberto Soto is President and CEO of The Denver Foundation. Before joining The Denver Foundation in October 2019, Soto spent 10 years as President and CEO of The Miami Foundation. He has strong personal ties to Colorado. In his first month with The Denver Foundation, he cycled more than 60 miles through dozens of neighborhoods, meeting with residents and leaders along the way. Soto graduated from Florida State University with a B.A. in History and Political Science and earned his J.D. from Georgetown University Law Center.



### **Dan Waldvogle** Director of External Affairs, Rocky Mountain Farmers Union

Dan Waldvogle leads legislative and policy efforts representing roughly 20,000 family farm and ranch members of the Rocky Mountain Farmers Union. He has a diverse background in agriculture having raised livestock, practiced meat processing, and produced specialty crops. He is passionate about creating opportunities with the hope of maintaining the stewardship of our working lands and livelihoods. He leads a program called AgWell, which is designed to provide stress management support to agricultural workers throughout Colorado, New Mexico, and Wyoming, connecting them and their families to the resources they need to get the support they deserve.



# CHI PRESENTERS



5th HOT ISSUES

## **Karam H. Ahmad** Senior Policy Analyst

Karam Ahmad leads CHI's Acclimate Colorado climate change and health work. In addition to climate work, he leads evaluation on multiple projects and works on a variety of health policy issues, ranging from integrating systems of care, health policy leadership, oral health, health equity, behavioral health, and more. He joined CHI in 2017. Ahmad earned his master's degree in public health from the Colorado School of Public Health at Colorado State University and a certificate in Climate Change and Health from Yale University.



3rd HOT ISSUES

## **Kristi Arellano** Managing Director of Marketing & Communications

Kristi Arellano leads CHI's team of writers, editors, and designers focused on positioning CHI and ensuring its work is clear, concise, and visually compelling. In previous roles, she led communications and branding efforts for the Boettcher Foundation, a \$300 million philanthropic foundation focused on scholarships and biomedical research funding, and held various reporting and editing positions with The Denver Post.



2nd HOT ISSUES

## **Nina Bastian** Program Manager

Nina Bastian leads multistakeholder initiatives focusing on large-scale health promotion and research. She provided project support and guidance for CHI's community engagement work with metro Denver health systems participating in the state's Hospital Transformation Program. Her work at CHI involves partnering with state agencies on projects, including the Office of Early Childhood on a statewide needs assessment and the Colorado Department of Health Care Policy and Financing on payment reform initiatives. She is also the facilitator and coordinator for Advancing Breastfeeding in Colorado, a partnership to help communities become more breastfeeding friendly.



11th HOT ISSUES

## **Jeff Bontrager** Director of Research & Evaluation

Jeff Bontrager oversees CHI's evaluation portfolio and coordinates research efforts related to health insurance, Coloradans who lack insurance, the health care safety net, and health equity. He also supports CHI's Acclimate Colorado team. He serves as principal investigator on the biennial Colorado Health Access Survey and the annual evaluation of The Denver Foundation's Colorado Health Access Fund. He was a founding member of CHI's Inclusivity, Diversity, and Equity Alliance, and provides facilitation, leadership, and technical expertise for a variety of advisory groups. Bontrager earned a master's degree in public health from the University of Colorado.



6th HOT ISSUES

## **Ashlie Brown** Director

Ashlie Brown focuses on complex systems change, including health information technology and health care delivery system and payment reform. She has contributed to CHI projects, including: The Cost of Doing Business: Employers' Role in Reducing Health Costs; Building Partnerships: The Regional Health Connectors' Impact on Colorado; and Value and Impact of Telemedicine During the COVID-19 Response. Prior to entering public service, Brown worked in the medical device industry. She holds two degrees in mechanical engineering.



8th HOT ISSUES

### **Joe Hanel** Director of Communications

With nearly 20 years of experience at Colorado newspapers, Joe Hanel communicates CHI's work to a broad audience, including news reporters, legislators, health advocates, and voters. He developed a financial map that tracks federal funds for Colorado governments and agencies through the American Rescue Plan Act. Hanel earned a master's degree in international affairs from the Johns Hopkins University School of Advanced International Studies.



1st HOT ISSUES

### **Kirsti Klaverkamp** Program Manager

Kirsti Klaverkamp oversees development and execution of programs and projects across multisector stakeholder groups, including public health, human services, and community-based, clinical, government, and business organizations. Prior to joining CHI, she managed operations, quality improvement activities, and regional work groups for the Accountable Health Communities Model, a demonstration project under the Center for Medicare & Medicaid Innovation. Klaverkamp earned a master's degree in community health from the University of Colorado Denver.



7th HOT ISSUES

### **Emily Johnson** Director of Policy Analysis

Emily Johnson uses financial modeling and other forms of quantitative analysis to study how both local and federal health policy proposals could affect Colorado, its budgets, and its residents. She oversees CHI's behavioral health portfolio. She holds a master's degree in health services research from the University of Colorado. Her academic work focused on the associations between state regulations and nonprofit hospital community benefit spending and behavior.



1st HOT ISSUES

### **Suman Mathur** Program Manager

Suman Mathur facilitates health promotion and research initiatives with multiple stakeholders across Colorado. She is skilled in project planning, program monitoring and evaluation, data communication, and working with diverse partners to impact health. Prior to joining CHI, Mathur was an Evaluator and Data Analyst for the Health District of Northern Larimer County, evaluating behavioral health programs and coordinating the district's triennial Community Health Assessment. She also serves as an adjunct instructor for the Colorado School of Public Health at Colorado State University and serves on the university's Institutional Review Board. She earned an undergraduate degree in neuroscience from Dartmouth College and a master's degree in public health from the Johns Hopkins Bloomberg School of Public Health.

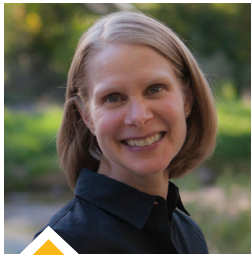


8th HOT ISSUES

### **Allie Morgan** Director

Allie Morgan manages CHI's internal research agenda and leads the organization's work with Colorado lawmakers, providing commentary on state policy developments and briefings to legislators, county commissioners, state department leaders, and legislative staff. She has coordinated the Hot Issues in Health conference since 2014. Morgan has led and supported CHI teams on consulting projects in the government and nonprofit sectors to understand telemedicine utilization, cost structures, and experiences during the COVID-19 pandemic. She holds a master's degree in public administration with a certificate in economic development from the Fels Institute of Government at the University of Pennsylvania.

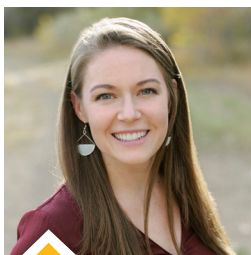
# CHI PRESENTERS



9th HOT ISSUES

## **Sara Schmitt** Interim President & CEO

Sara Schmitt assumed the role of Interim President and CEO of CHI in July 2022, after more than a decade in progressive leadership roles with the organization. Most recently, Schmitt served as Managing Director of Research, Evaluation, and Consulting. Before joining CHI, Schmitt was a policy analyst at the Colorado Rural Health Center, the state office of rural health, and recruited physicians and other medical professionals for clinics and hospitals in Colorado's rural and underserved regions. She spent several years in managed care and program development at the University of Chicago Medical Center. She holds a bachelor's degree from DePaul University and a master's degree in health administration and policy from the University of Chicago.



3rd HOT ISSUES

## **Nicole Weber**, Program Manager

Nicole Weber manages and facilitates public health and health system programming. She leads a diverse portfolio of public health projects, including using regional partnerships to address COVID-19 response, immunizations, behavioral health, and health equity. As the program lead for the Metro Denver Partnership for Health, Weber develops and oversees program administration processes, including workplans, budgets, subcontracts, and communications. She holds a master's degree in public health from the University of Minnesota School of Public Health.



**WE ARE HONORED TO SUPPORT HOT ISSUES IN HEALTH**

coaccess.com | 800-511-5010





# ORGANIZATIONS REPRESENTED BY ATTENDEES

Placeholder page



## COLORADO **HEALTH** INSTITUTE

1999 Broadway, Suite 600 • Denver, CO 80202 • 303.831.4200  
[coloradohealthinstitute.org](http://coloradohealthinstitute.org)



The Colorado Health Institute is a trusted source of independent and objective health information, data, and analysis for the state's health care leaders. CHI's work is made possible by generous supporters who see the value of independent, evidence-based analysis. Those supporters can be found on our website [coloradohealthinstitute.org/about-us](http://coloradohealthinstitute.org/about-us)









































