

the Metro Denver Social-Health Information Exchange *initiative*



Vision:

Individual social and health needs are met to promote equity and improved health outcomes in our communities.



Mission:

We collaborate and align technology, connecting community resources and the people they serve.

The Metro Denver S-HIE initiative is powered by an integrative governance structure that facilitates shared leadership, decision-making, and action among all partners. Each group has a specific purpose and commitments to the partnership.

COMMUNITY BOARD

Purpose: Empower community leadership in cross-sector systems change.

Our Core Commitment: We commit to empowering community leadership to ensure community needs and priorities drive the work of the Metro Denver S-HIE initiative.

Supporting Commitments:

We commit to:

- Fully supporting individuals to participate, including through one-on-one conversations and financial compensation.
- Providing accessible information and engagement opportunities for community members to guide the Metro Denver S-HIE initiative.
- Co-designing the roles and expectations of Community Board members.
- Developing a safe and trusting environment for community members to share their true and authentic selves.
- Providing open, honest, and transparent feedback to the Colorado Health Institute and partners to ensure everyone's voices are heard through bidirectional communication.

IMPLEMENTATION WORKGROUP

Purpose: Plan and implement interoperability strategy, including information governance, to support the development of a S-HIE ecosystem.

Our Core Commitment: We commit to sharing discrete data that can be integrated into another system and acted upon, supporting and enabling person- and family-centered care through the S-HIE ecosystem.

Supporting Commitments:

We commit to:

- Developing internal buy-in for interoperability within our own organizations.
- Adopting a shared data language that allows communication across systems.
- Serving as responsible resource stewards to develop an efficient and effective S-HIE ecosystem.
- Providing person- and family-centered care through the S-HIE ecosystem.
- Supporting the use cases and workflows of other organizations that are aligned with S-HIE.

SUSTAINABILITY WORKGROUP

Purpose: Design and implement shared financing strategies to maintain the initiative.

Our Core Commitment:

We commit to laying the groundwork for a sustainable whole-person and whole-family care model, including an interoperable S-HIE ecosystem, in the metro Denver area.

Supporting Commitments:

We commit to:

- Serving as champions within our own organizations and within the partnership to advance the long-term vision for S-HIE.
- Inspiring partners to find ways and take actions to resolve the political, financial, and systemic barriers to efficient collaboration.
- Bridging the gap between community priorities and sources of funding by advocating for funding and policy change to sustain S-HIE.

ACCOUNTABILITY WORKGROUP

Purpose: Monitor, measure, and evaluate S-HIE implementation and performance.

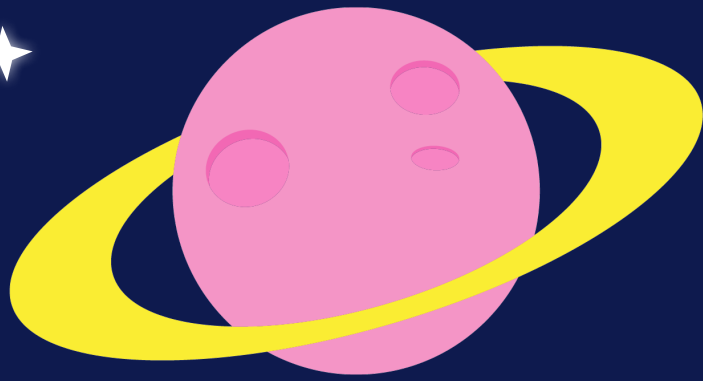
Our Core Commitment:

We commit to a person- and family-centered approach to evaluation.

Supporting Commitments:

We commit to:

- Promoting creativity and innovation in our approach to monitor, guide, and evaluate the emerging S-HIE ecosystem.
- Practicing a learning mindset in our accountability efforts.
- Building an inclusive and equitable approach — respecting the dignity, well-being, and value of diverse groups represented in the evaluation.
- Adopting a pragmatic, transparent approach that advances the vision of a S-HIE ecosystem.



The Metro Denver Social-Health Information Exchange initiative is led by the Metro Denver Partnership for Health. Partners include public health agencies, health systems, community-based organizations, community members, human service agencies, Regional Accountable Entities, and technical organizations. Colorado Health Institute convenes and facilitates the initiative. Learn more at: colo.health/S-HIE

These commitments were drafted at the first annual Metro Denver S-HIE convening, held April 19-20, 2022. The Center for Complex Health and Social Needs, an initiative of the Camden Coalition, sponsored the event. The goal of the convening was for partners to feel energized and engaged as leaders to advance S-HIE. The convening also welcomed anyone in the public interested in learning more about or getting involved with the initiative.



METRO DENVER
PARTNERSHIP FOR HEALTH



COLORADO HEALTH INSTITUTE

Informing Strategy. Advancing Health.